

THE CHURCH OF
JESUS CHRIST
OF LATTER-DAY SAINTS



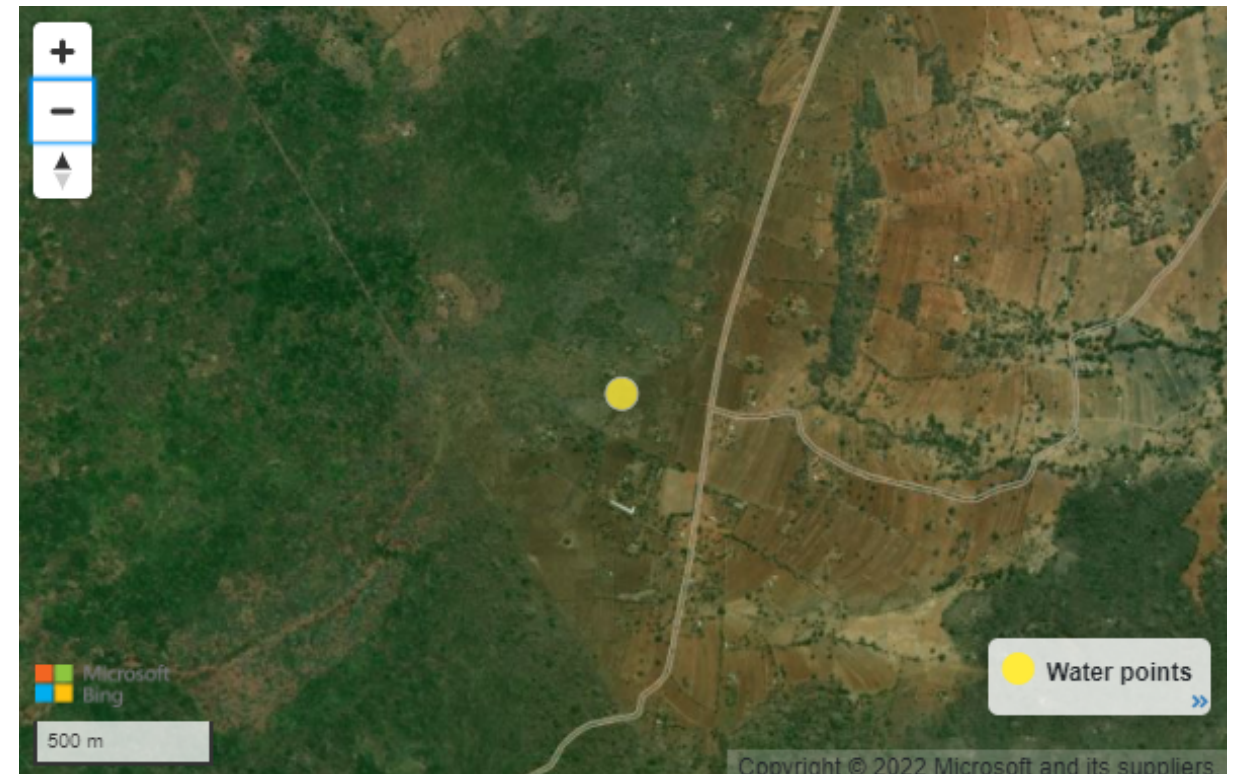
IN LOVING MEMORY OF
Our Dear Father
**Anuj Chandulal
Rajani**



Completion report *Nguluni* February 2023



MAPS



Living Water Communities

Name water point	Population within 1km	Administrative region	GPS Location
KE_LDS16_Nguluni Primary School	1,077	Ivingoni/Nzambani, Kibwezi East, Makueni, Kenya	-2.622707, 37.973143

THE CHALLENGES

Nguluni community is a farming community that was using a hand dug well for their daily water needs – which is located approx. 5 km from the community. Very often this well ran dry, and therefore is very unreliable.

The previous site was also very difficult to access, and us shared by animals and humans.

This is now all a thing of the past, and clean, safe water is being supplied to the community. 2 Access points have been installed:

1. Primary school (free water)
2. Communal kiosk (e-pay)



DRILLING - completed



CONSTANT RATE DISCHARGE TEST PUMPING (24 HOURS)

Date:	20th November, 2022	Testing Contractor	Sparr Drilling Co. Ltd
Client:	Nguluni Primary School	Depth of Pump intake	96m
Location:	Makueni	Pumping Water Level	60.45m
Borehole Depth:	122m	Static Water Level	30.00m

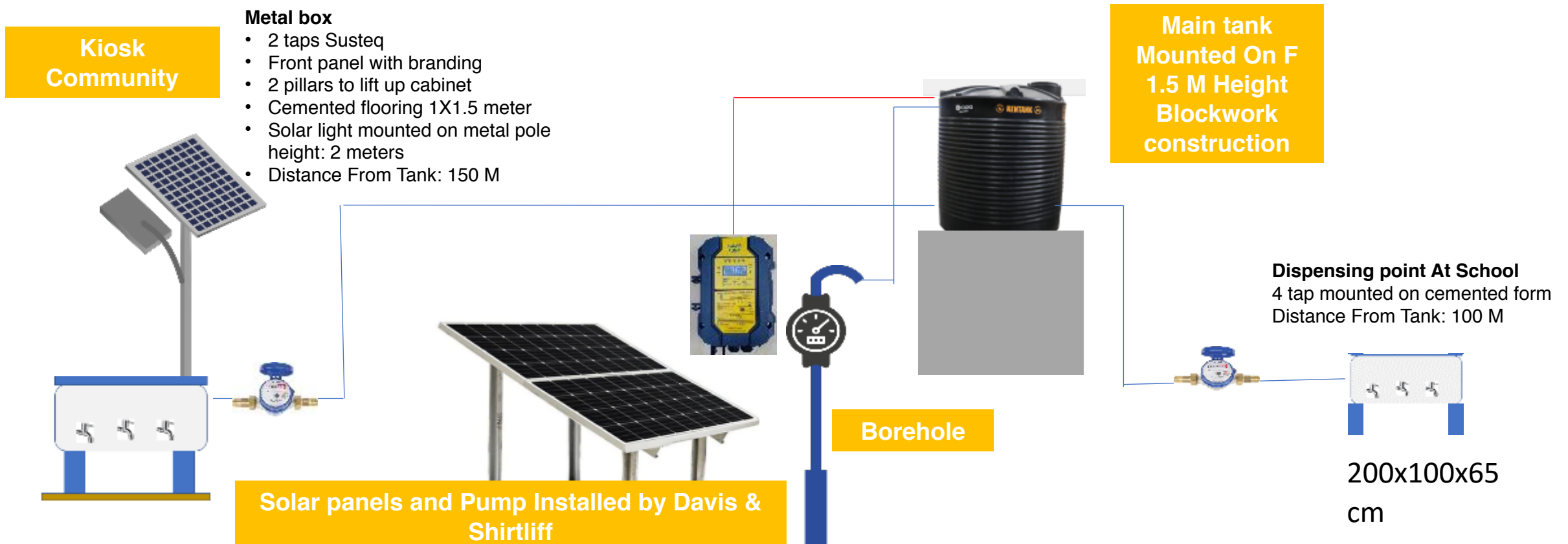


SYSTEM DESIGN SCHEMTICS NGULUNI

Major components

1. All pipes must be 1.5-inch pipe (HDPE)
2. Tank 5,000L
3. Solar panels and pumps installed by Davis & Shirtliff
4. Solar lights X1
5. Payment system (of two taps) x1
6. Float Sensor in Tank. Wire length 12 Meters
7. Gate valves 1.5" output of the tanks
8. All taps should be changed to GI
9. The pipe needs to be of good quality

- Elevation 4 meter from borehole to Tank
- Distance – Bore hole to Tank 2 meters
- Dispense point at school to be mounted on metal structure
- Water line from tank to community dispense point 150 meters
- Water line from tank to school dispense point 100 meters
- Red wire shows sensor wire to connect the float switch



INSTALLATION Jan '23

The payment system is activated on 1 February, and the community has shown great patronage – with higher than expected water volumes being dispensed. The solar panels are placed at the borehole location and the kiosk close to the Primary and Secondary school. This will tremendously improve their health and capacity to learn.



INSTALLATION Jan '23

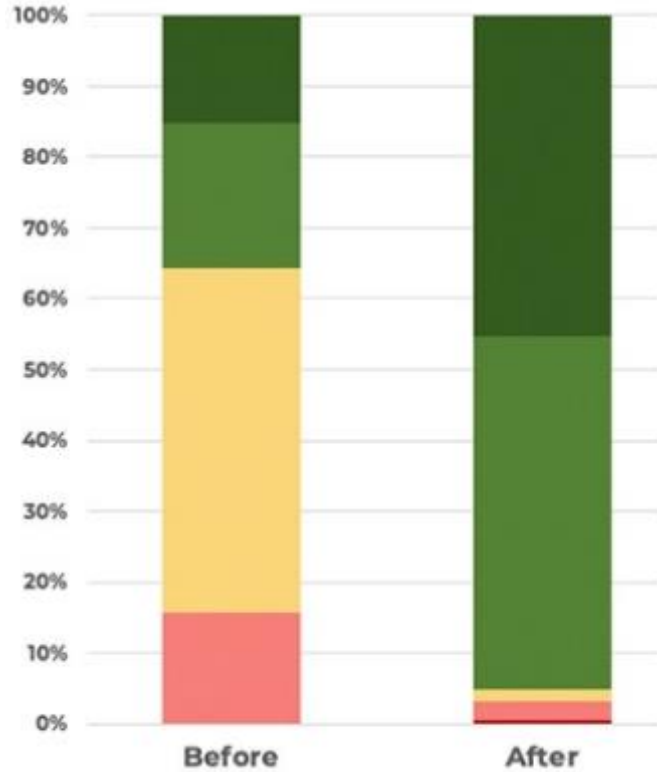




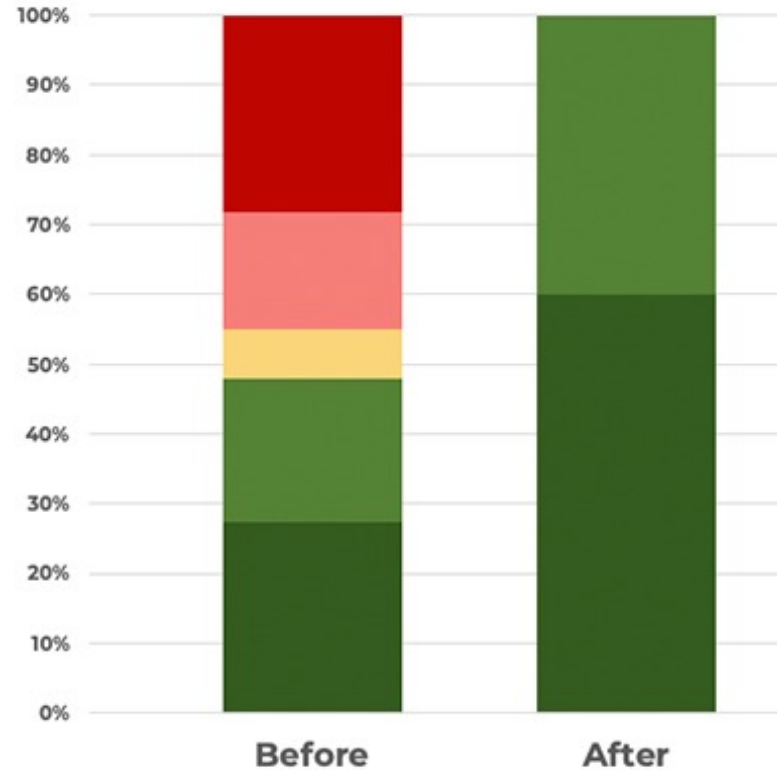
On behalf of the community of Kawala, we thank Sparr and Davis & Shirliff for changing lives for good through clean water!

IMPACT BY NUMBERS

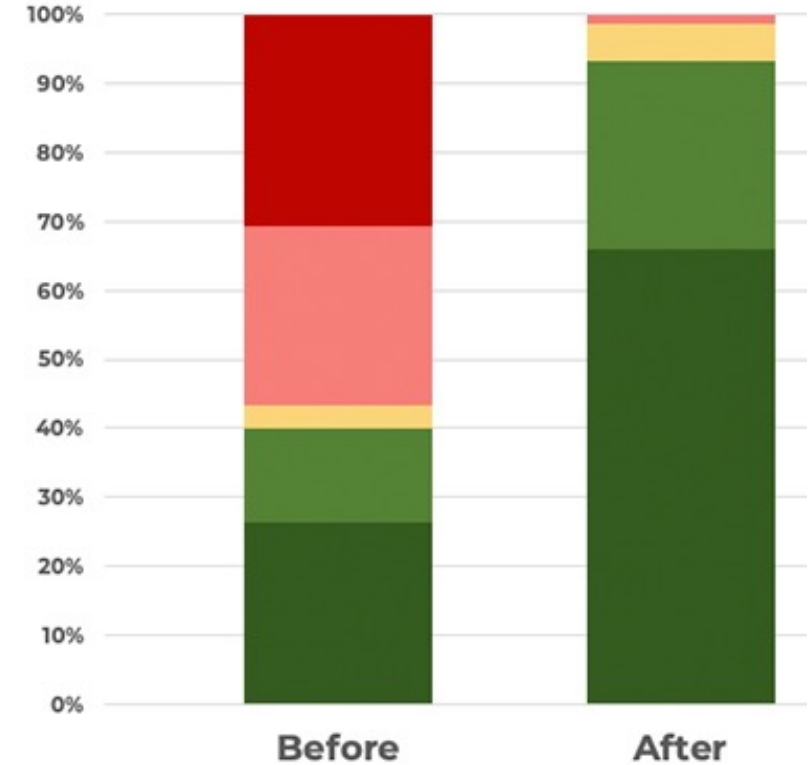
WATER SOURCE SATISFACTION



HEALTH IMPROVEMENT



EASE OF ACCESS



■ Very Satisfied

■ Satisfied

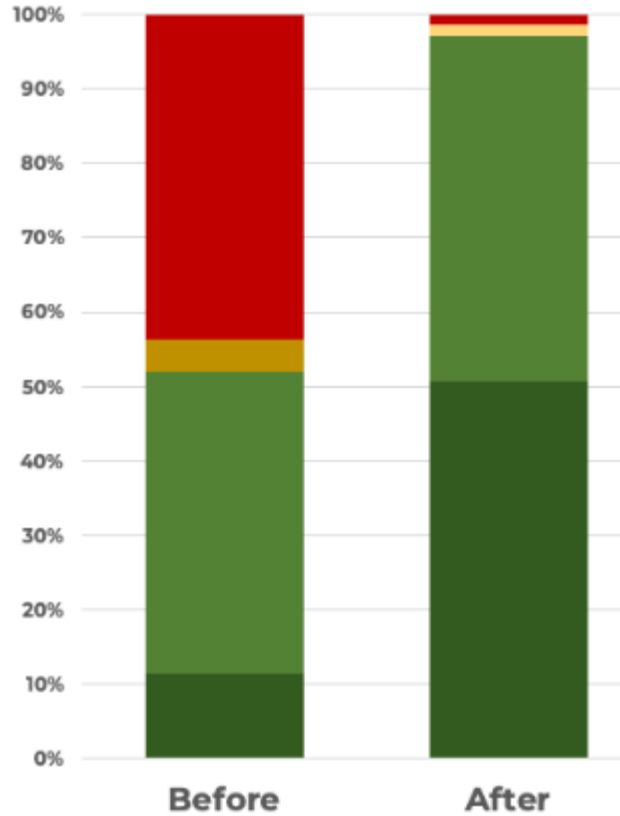
■ Neutral

■ Dissatisfied

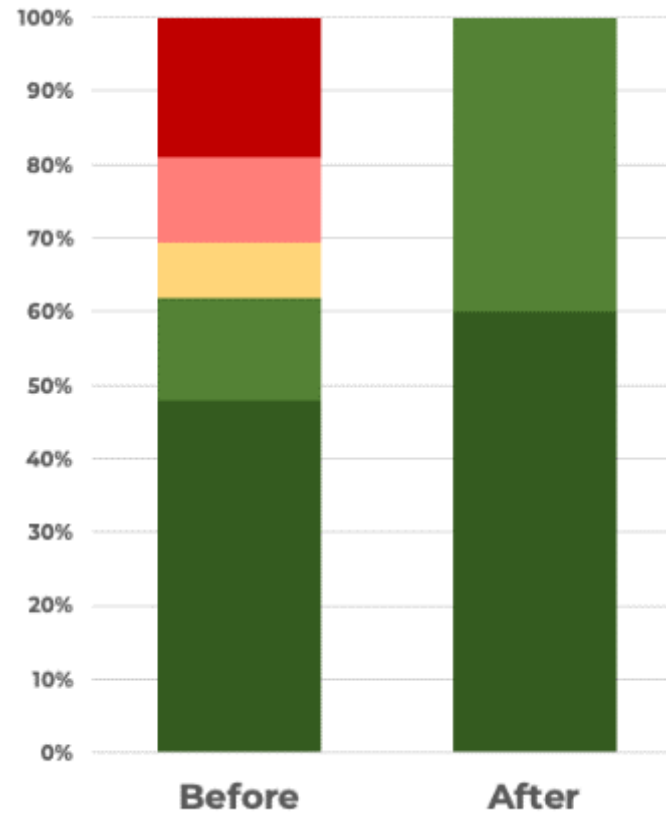
■ Very Dissatisfied

IMPACT BY NUMBERS

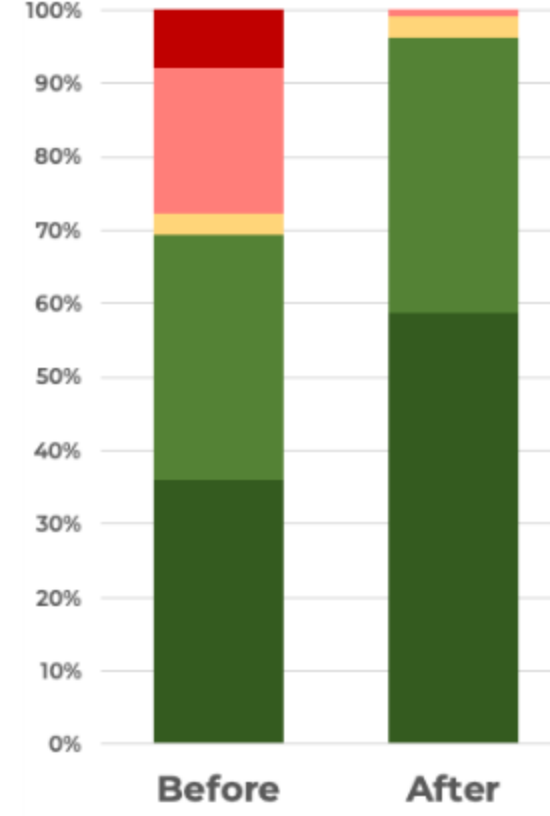
WATER SOURCE RELIABILITY



CLARITY OF WATER



SAFETY IN ACCESS



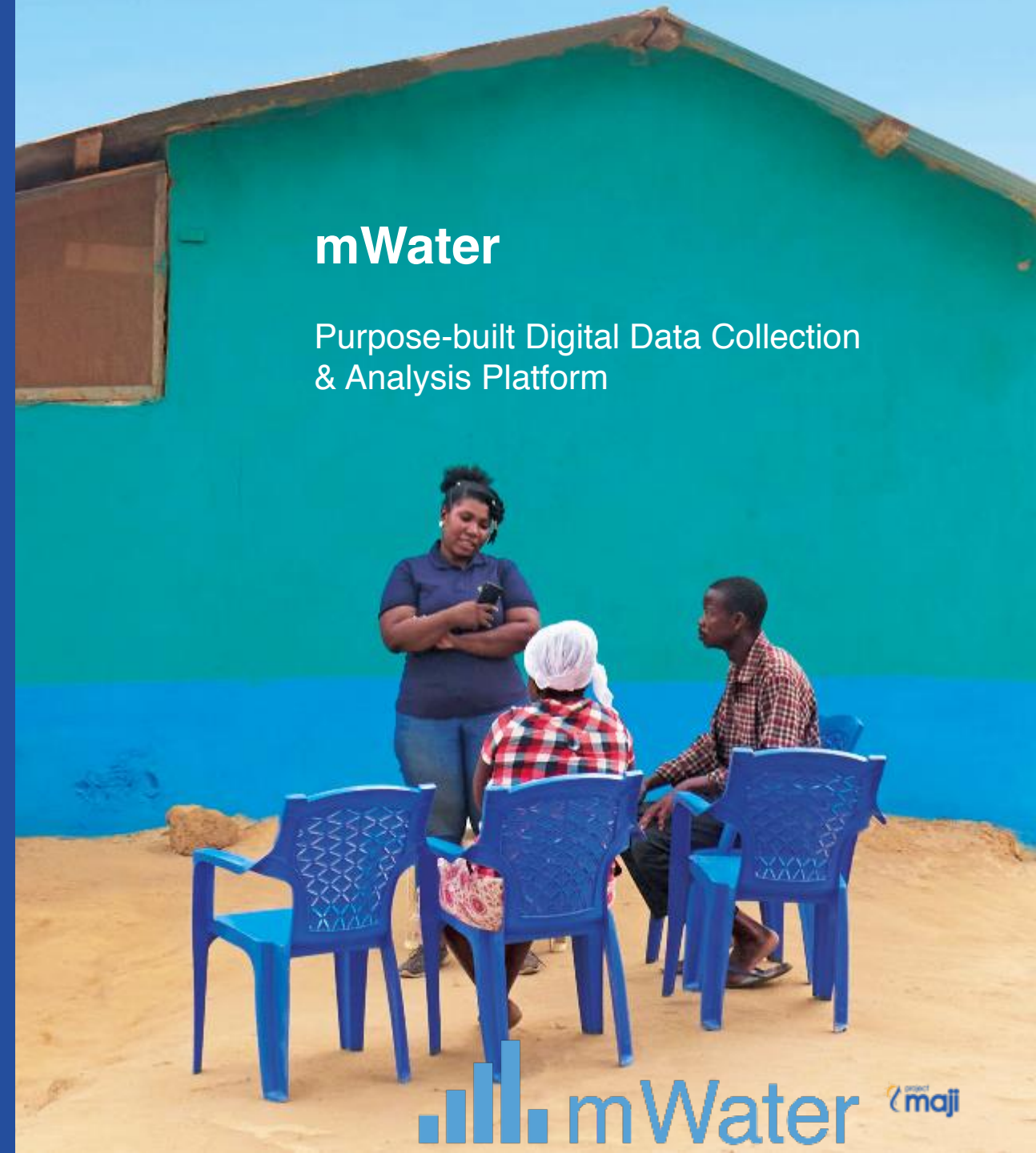
■ Very Satisfied ■ Satisfied ■ Neutral ■ Dissatisfied ■ Very Dissatisfied

Take a look at our digital impact dashboard!

We measure the impact of every donor dollar donated using mWater – a digital data collection & analysis platform.

Our live-impact dashboard shows progress on key KPIs & is automatically updated every time a survey is conducted.

The dashboard allows for evidence-based comparison of pre-and-post intervention data from Maji communities, informing the development of efficient user-centric rural water solutions. Visit our [live impact dashboard](#).



mWater

Purpose-built Digital Data Collection
& Analysis Platform

THE CHURCH OF
JESUS CHRIST
OF LATTER-DAY SAINTS



IN LOVING MEMORY OF
Our Dear Father
**Anuj Chandulal
Rajani**



Next report, will show the installation of
the kiosk. Expected in December 2022